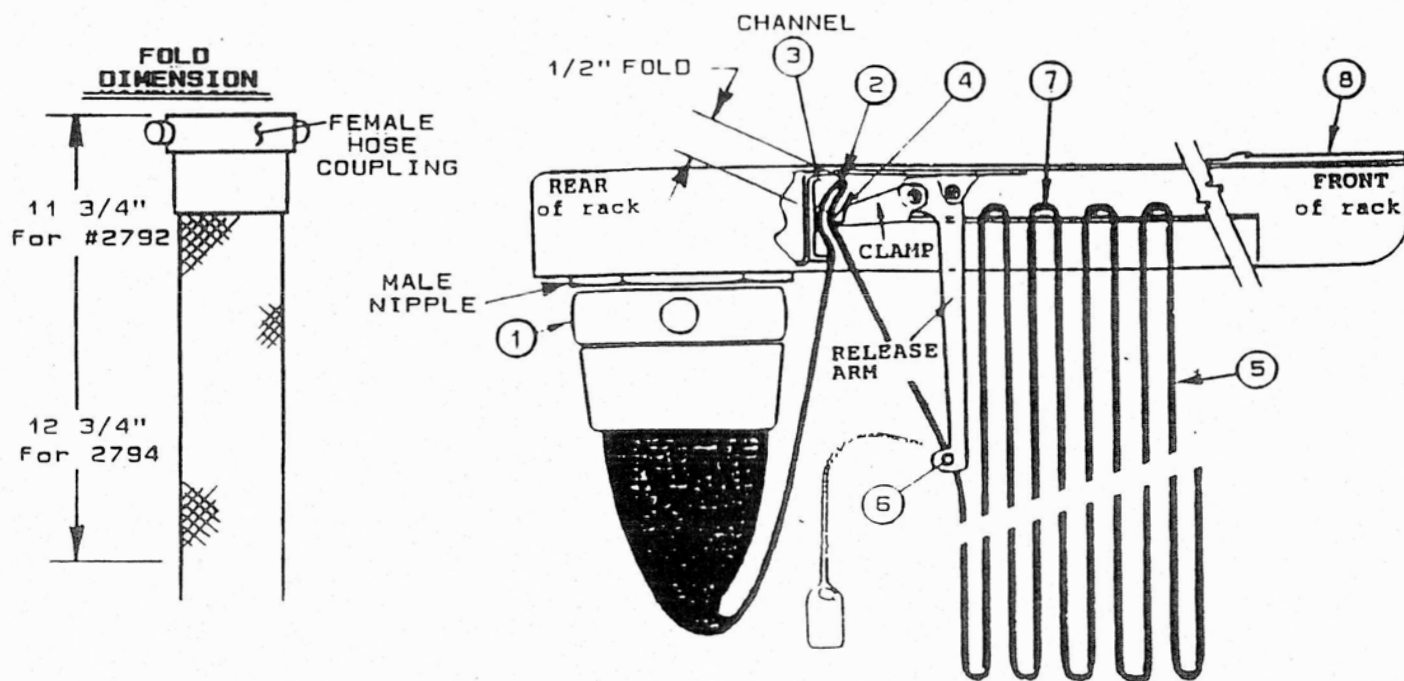


INSTRUCTIONS for MOUNTING HOSE in
#2792 (1-1/2") or #2794 (2-1/2"X1-1/2")
SEMI-AUTOMATIC HOSE RACKS

1. Connect the female hose coupling to the male nipple and tighten. (For model #2794, connect to the adapter, not shown,)
2. Make the appropriate fold at the dimension shown for the hose rack to be used. From that fold, form a loop back to the clamp.
3. Center the folded hose in the clamping channel.
4. Position the clamp and firmly press the release arm to the rear, clamping the hose and locking the arm in the vertical position.
5. To insure that the hose is tightly clamped, tug on the hose.
6. Insert the second fold of hose between the ears of the release arm. Attach a new hose tie and date with month and year.
7. Place the remaining folds of hose on the rack pins.
8. Place the outlet end of the nozzle in the nozzle clip on the front of the rack. Nozzle is to be in fully-open position.

OPERATION

With the hose properly installed, hose valve may be opened without water passing beyond the clamp. Water will be released after the last loop of the hose is pulled from the rack. Fog nozzle is to be installed in the fully-open position.



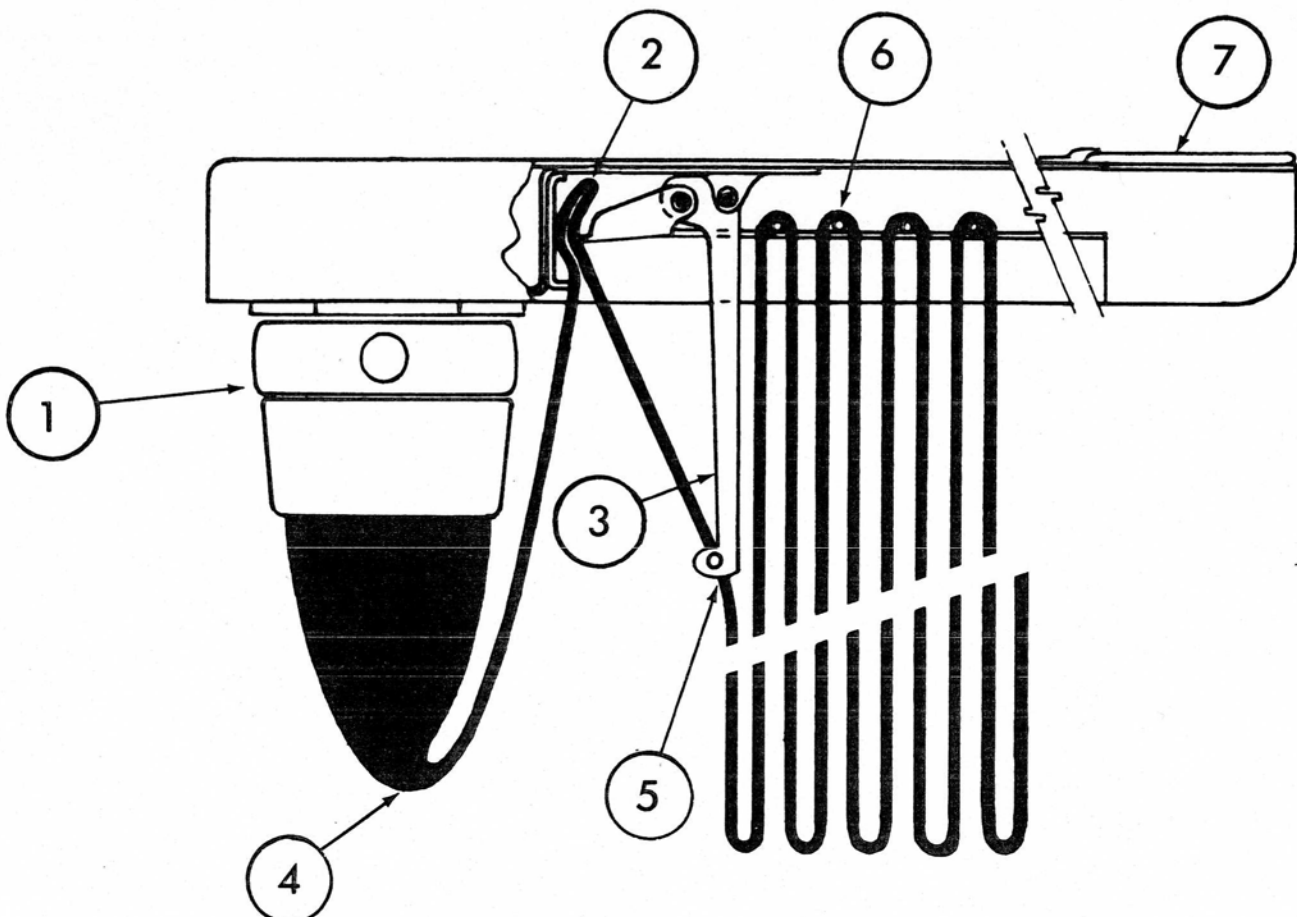
**INSTRUCTIONS FOR MOUNTING HOSE IN
2790 SERIES
SEMI-AUTOMATIC HOSE RACKS**

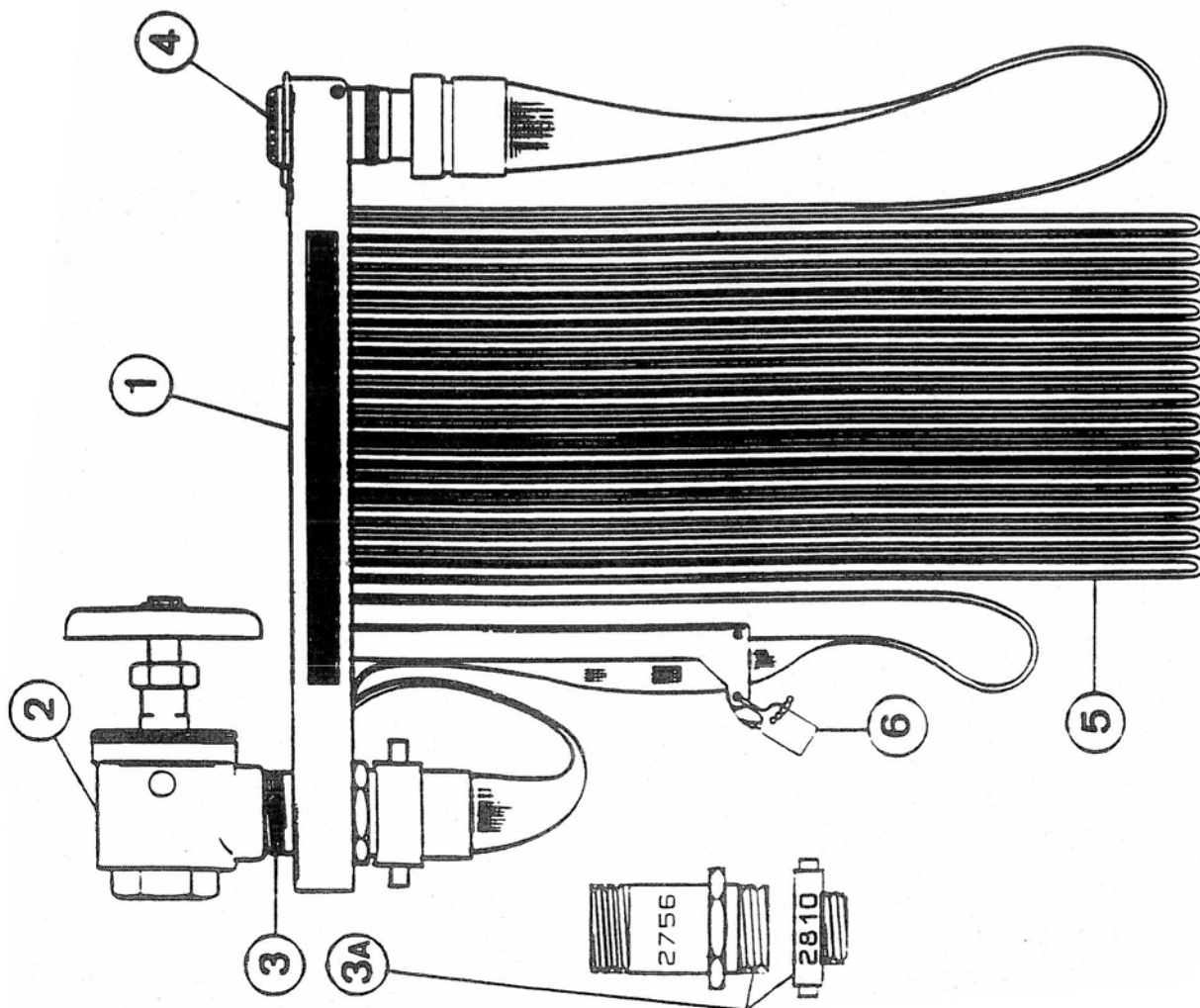
1. Attach female coupling to nipple.
2. Fold hose 9" from coupling, and insert between male and female sections of clamp bar as shown.
3. Clamp hose by pulling release arm down to vertical position as shown.
4. Check to see if hose is clamped tight by pulling on hose.
5. Second fold must be inserted between trigger ears as shown. Then thread plastic seal through both holes and secure.*
6. Place remaining folds of hose on pins.
7. Place tip end of nozzle in nozzle clip on front rack.

*Spare seals are taped to the top of each hose rack.

OPERATION

With hose properly installed, valve may be opened without water passing beyond clamp bar. Water will be released after last loop of hose is pulled from rack.





ITEM	PART NO.	DESCRIPTION
1	2792	1 1/2" Hose Rack
	2794	2 1/2" Hose Rack
2	4070	1 1/2" Angle Hose Valve
	4075	2 1/2" Angle Hose Valve
3	2755	1 1/2" Brass Rack Nipple
3A	2756	2 1/2" Brass Rack Nipple
	2810	2 1/2" to 1 1/2" Reducing Adapter
4	2962	1 1/2" Brass Hose Nozzle
5	2915	1 1/2" Lined Interior Stand-pipe Fire Hose
6	2792SEAL	Fire Hose Seal, Plastic, Dated, MO./YR.

FIRE HOSE RACK ASSEMBLY MOUNTING AND INSTALLATION INSTRUCTIONS

The Series 2500 fire hose rack assembly is intended for installation and use in accordance with these instructions, and the requirements of the National Fire Protection Association Standard for Standpipe and Hose Systems, NFPA 14.

The Series 2500 fire hose rack assembly incorporates, and is for use with the components shown on the attached assembly drawing.

These devices and components are installed as follows:

1. Open shipping carton and remove all components.
2. Install and Set (If a pressure restricting, or pressure reducing valve is used) the hose valve in accordance with the individual valve manufacturer's installation instructions provided in the valve carton, NFPA 14, and the local building code.
3. Unscrew the hose from the supplied rack mounting nipple (3). Apply pipe sealant to the nipple and then place the rack nipple through the rack (1) and thread the nipple into the already mounted valve. Reattach the hose to the installed rack nipple.
4. Check to verify that the rack remains in the clamped position.
5. Remove any packing string material from hose bundle.

Hose Mounting:

After each use, re-install the fire hose in accordance with the Model No. 2792 and 2794 Fire Hose Rack, Instructions for Mounting Hose as shown in these instructions.

SERIES 2500
HOSE RACK ASSEMBLY
MAINTENANCE INSTRUCTIONS

Hose Rack Assembly components shall be inspected and maintained in accordance with the applicable sections of the National Fire Protection Association Standard for the Inspection, Testing and Maintenance of Water-Based Fire Protection Systems, NFPA 25.

In addition, verify that the hose is folded over all of the rack pins. Also, the rack should be cleaned periodically to ensure that the Operating Instruction Label is clean and legible.