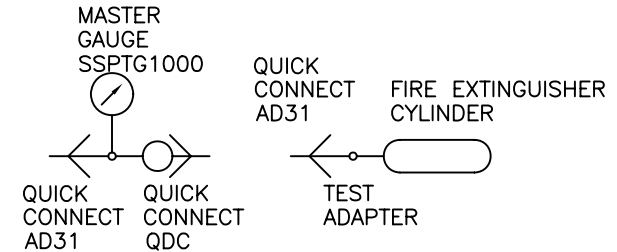
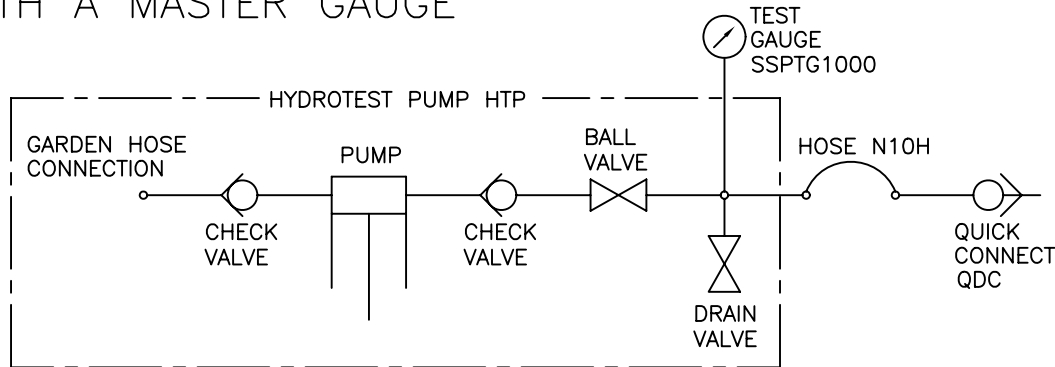


REVISIONS				
ZONE	REV	DESCRIPTION	DATE	APPROVED
	1	SSPTG1000 WAS TG1000	4/7/00	C. KIMBALL
	2	N10H AND QDC NOT IN HTP	9/26/06	C. KIMBALL

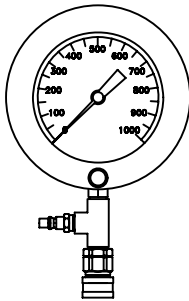
HYDROTEST SETUP WITH A MASTER GAUGE



MASTER GAUGE SETUP

(RECOMMENDED)

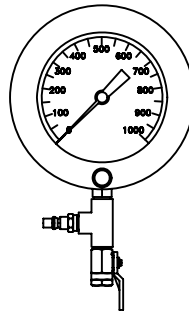
PARTS REQ'D:
(1)SSPTG1000
(1)1/4" TEE
(1)QDC
(1)AD31



THIS SETUP ALLOWS USE OF THE MASTER GAUGE WITH THE TEST PUMP AND TEST GAUGE DURING ACTUAL TESTS BUT CAN ALSO BE REMOVED FROM THE SETUP AFTER CALIBRATION HAS BEEN DEMONSTRATED.

(ALTERNATE)

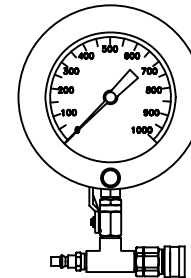
PARTS REQ'D:
(1)SSPTG1000
(1)1/4" TEE
(1)14BV
(1)AD31



THIS SETUP ALLOWS USE OF THE MASTER GAUGE WITH THE TEST PUMP AND TEST GAUGE DURING CALIBRATION BUT MUST BE REMOVED FROM THE SETUP FOR TESTING.

(ALTERNATE)

PARTS REQ'D:
(1)SSPTG1000
(1)1/4" TEE
(1)QDC
(1)AD31
(1)14BV



SAME AS RECOMMENDED SETUP EXCEPT THE BALL VALVE ALLOWS MASTER GAUGE TO BE ISOLATED.

<small>UNLESS OTHERWISE SPECIFIED: DIMENSIONS ARE IN INCHES TOLERANCES DECIMALS .01 FRACTIONS 1/32 DO NOT SCALE DRAWING</small>		BROOKS EQUIPMENT CO., INC.			
		HYDROTEST SETUP			
DRAWN	RCK	DATE	9/97	SIZE	C
CHECKED		SCALE		FSCM NO.	DWG NO.
DESIGN				HT SETUP	REV 2
		SHEET 1 OF 1			