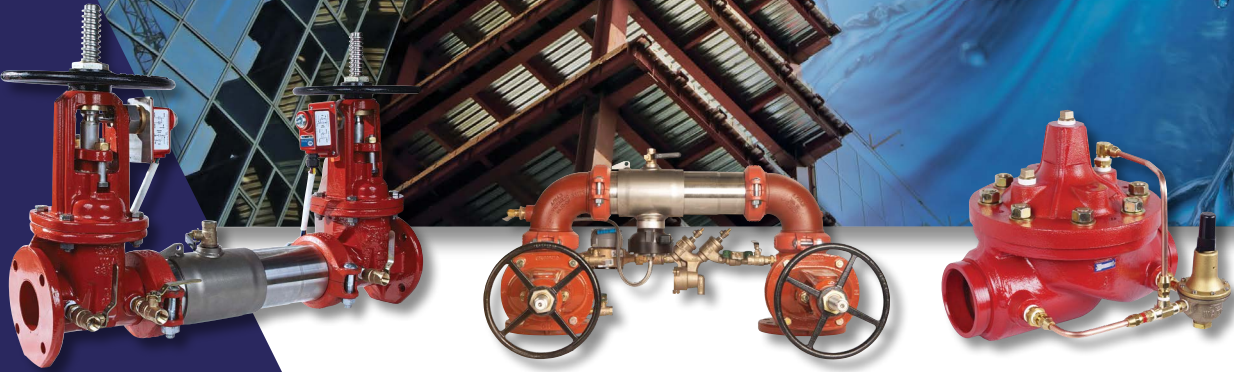


# Flow Control for Fire Protection

Valve Solutions from an Industry Leader





# Count on the Fire Protection Leader for Reliable Flow Control Solutions

Ames provides a range of high-quality products designed for use in fire protection sprinkler systems. Our portfolio includes backflow preventers, relief valves, UL ball valves, automatic control valves (ACVs), gear-operated ball valves, UL strainers, and in-building risers.

## What sets our products apart

- High quality and unmatched performance
- Industry proven reliability
- Designed for easy serviceability
- ACVs with fused-epoxy coating that prolongs valve life
- Lighter, more compactly designed backflow preventers
- Lower installation costs
- Stainless steel products for severe situations inside and out
- UL Classified, UL Listed, or FM Approved as well as locally required approvals

## Typical Applications for Ames Fire Protection

### Residential



### Commercial



### Institutional



### Industrial



# WATTS<sup>®</sup> WORKS<sup>™</sup>

## LEARNING PROGRAM

### Online Training

Spruce up your skills anywhere, anytime with Watts<sup>®</sup> eLearning courses.

- Up to 40 courses on backflow preventers, from novice to expert training
- Self-paced courses less than 10 minutes
- On-demand from any device
- Earn tokens to spend lifestyle merchandise with Learn & Earn

### Learning Centers

Our state-of-the-art classrooms staffed with highly-qualified instructors will give you the hands-on training you need to better understand the right product for the job and how to use and maintain it.

- North Andover, Massachusetts
- Burlington, Ontario, Canada
- St. Pauls, North Carolina
- Woodland, California
- Blauvelt, New York

Scan to  
start learning





## **Deringer™ 20, 30, 40, 50** **100% Stainless Body Backflow Preventers**

The shortest, lightest, and only all stainless steel backflow in the industry. Deringer provides superior corrosion resistance and minimal head loss to ensure maximum possible water pressure after the backflow preventer. Lighten up with Ames Deringer.

- Patented Dual-action™ check modules
  - Poppet action at low flow
  - Swing action at high flow
- Integral shutoffs for shorter lay length and light weights
- Pre-wired supervisory switches
- Sizes 2½" – 8"



Deringer 30 — 8 inch

## **Deringer 20G, 30G, 40G, 50G** **OS&Y Backflow Preventers**

The same serviceability and performance of the Deringer Series 20, 30, 40, 50 but for applications requiring OS&Y gate valves.

- Patented Dual-action™ check modules
  - Poppet action at low flow
  - Swing action at high flow
- Inline serviceable gate valves
- Stainless steel housing
- Sizes 2½" – 8"

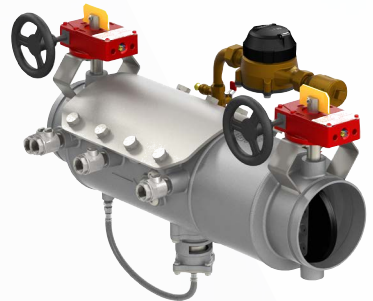


Deringer 20G — 8 inch

## **Deringer 20X, 30X, 40X, 50X** **Low Head Loss Stainless Steel** **Backflow Preventers**

Built with oversized checks and bodies, as well as integral butterfly shutoffs, this series of backflow preventers delivers lower head loss for demanding applications, potentially saving the time and money required to install larger systems as well as pumps.

- Oversized checks for extreme performance
- Patented Dual-action™ check modules
  - Poppet action at low flow
  - Swing action at high flow
- Integral shutoffs for shorter lay length and light weights
- Sizes 4" – 6"

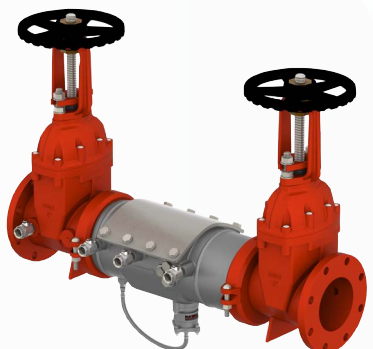


Deringer 50X — 6 inch

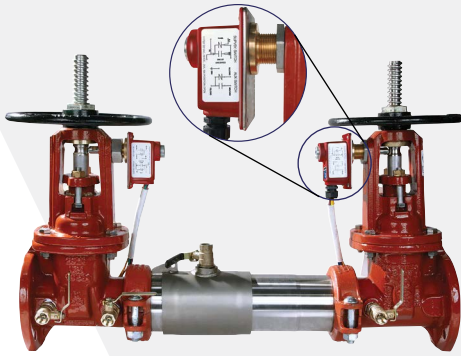
## **Deringer 20GX, 30GX, 40GX, 50GX** **Low Head Loss OS&Y Backflow Preventers**

Built with oversized checks and bodies, this series of backflow preventers with OS&Y gate valves delivers lower head loss for demanding applications, potentially saving the time and money required to install larger systems as well as pumps.

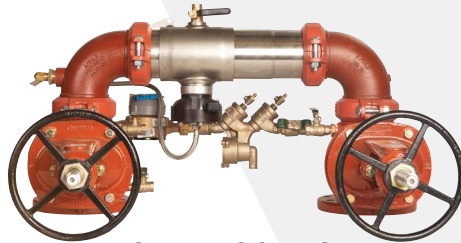
- Oversized checks for extreme performance
- Patented Dual-action™ check modules
  - Poppet action at low flow
  - Swing action at high flow
- Inline serviceable OS&Y gate valves
- Sizes 4" – 6"



Deringer 40GX — 6 inch



C200-OSY-TS



C500N-OSY-FS

## Backflow Preventers

### Colt® and Maxim® Series

The short lay length, lightweight, and compact design of the Colt and Maxim Series backflow preventers make them easy to install and the preferred choice of design engineers.

Available in DC, DCDA, RP, and RPDA configurations.

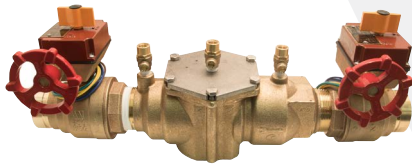
- Lowest certified pressure loss
- Valve body and closure sleeve manufactured from 300 series stainless steel for longevity
- Available with UL Listed and FM Approved butterfly valves, NRS gate valves, or UL Listed and FM Approved OS&Y gate valves
- Approved for horizontal, vertical, "N" pattern, or "Z" pattern installations
- Colts Series C200, C300, and LFC300 include an integrated supervisory tamper switch on each gate valve of OS&Y models
- Colts Series C400-FS, C500-FS, and LFC500-FS include an integrated sensor for flood detection; flood alert feature activated with add-on connection kit, available for BMS or cellular communication
- Maxim series uses larger body for improved flow performance
- Sizes 2½" – 10"

## Bronze Assemblies

### Series 2000B, 3000B, 4000B, LF2000B, LF4000B

This Series includes a quarter-turn ball valve, slow-close gear-operated ball valve, and hydrant shutoff options.

Available in DC, DCDA, and RP configurations.



2000B-FP

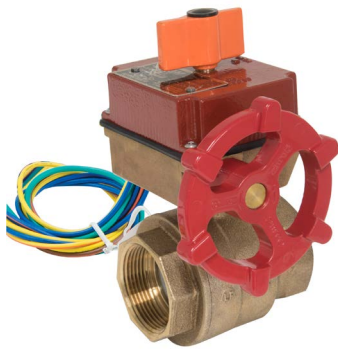
- Compact design
- Threaded and grooved options
- Low pressure loss
- Replaceable seats and seat discs
- Pre-wired tamper switches (2 per shutoff) with reversible wiring harness
- Sizes 1" – 2" cast bronze body construction (DCDA available in 2" only)
- Available in Lead Free\*

## Slow-Close Gear-operated Ball Valves

### LFAFBV-FP

Full-port, gear-operated ball valves are specifically designed for fire-suppression applications.

- Full port allows for low pressure loss versus butterfly style alternative
- Slow-closure rate effectively prevents water hammer and complies with NFPA 13 (6.7.1.2)
- Can be wired in either Normally-Open or Normally-Closed position
- Industry leading maximum rated operating pressure 400psig
- Threaded and grooved end connections
- Reversible supervisory switch box simplifies electrical wiring access with field repairable relay switch
- Sizes 1" – 2" diameters
- Available in Lead Free\*



LFAFBV

\*The wetted surface of this product contacted by consumable water contains less than 0.25% of lead by weight.

## Automatic Control Valves

### Series 910GF, 910AF Pressure Reducing Valve

These ACVs reduce high inlet pressure to a constant, lower outlet pressure across a broad range of flow.

- UL Listed valves typically installed in commercial or industrial fire sprinkler systems
- Automatically open and close to maintain pressure setting
- Diaphragm-actuated, pilot-operated valves are sensitive to downstream flow and pressure fluctuations
- Field-adjustable downstream pressure set point
- Stainless steel seat ring, disc guide, and shaft for corrosion protection
- Xylan® coating for greater peace of mind in hard or scaling water
- Threaded flange and grooved end connection
- Sizes 1.25" – 8"



910GF

### 920 Series Fire Pump Valves

Pressure-relief or sustaining valves open when inlet pressure is above the field adjustable set point.

- Available in globe or angle configurations for use in conjunction with fire pump systems
- Valves relieve excess pressure in pumping system to protect the downstream fire protection system
- Field adjustable set pressures
- UL Listed and FM Approved Deluge and Pump Suction Control Valves also available
- Allows the fire pump to reach a controlled stop, without surging by diverting output to discharge as the fire demand slows
- Stainless steel seat ring, disc guide and shaft for corrosion protection
- Sizes 1.5" – 8"



920A-UL

## Deluge Valve – Pneumatic Hydraulic Electric Actuated

### 900DF-A (Globe)

The Ames ACV 900DF-A (Globe) Deluge Valve meets all requirements for UL Listed fire protection service. The design and features incorporated in the Ames ACV Valves assure accurate control, dependable performance, and long life.

- Sizes 3" – 10"
- Approved for both vertical and horizontal installations.
- DI body with SS internals.
- Hydraulically or pneumatically actuated.
- UL Listed: 175psig maximum pressure



900DF-A

### 900DF-B (Globe) Electrically Actuated

The Ames ACV 900DF-B (Globe) Deluge Valve meets all requirements for UL Listed, fire protection service. The design and features incorporated in the Ames ACV Valves assure accurate control, dependable performance, and long life.

- Sizes 3" – 10"
- Approved for both vertical and horizontal installations.
- DI body with SS internals.
- UL Listed: 175psig maximum pressure.



900DF-B

## Detector Check Valve

### Series 1000SS

Series 1000SS Detector Check Valves detect any leakage or unauthorized use of water from fire or automatic sprinkler systems.

- Lightest weight in the industry
- Designed to meet NSF standards
- Check assemblies are based on popular modular design that has been proved in field use for over 15 years
- Lifting rings standard on 8" and 10" devices for ease of installation
- No special tools required for servicing
- Optional bypass assembly available
- Approved for mounting in horizontal or vertical position
- Custom tap sizes available upon request
- Non-corrosive stainless steel construction



1000SS

## Pressure Relief Valve

### Model FP53L

This valve is designed for use in fire protection grid systems to provide protection against excessive water pressure caused by thermal expansion or line surge.

- UL Listed
- Forged stainless steel spring
- Bronze body construction for superior strength and to prevent corrosion
- Manual test lever
- Valve stem is guided to enhance reseating
- 1/2" male inlet x female outlet
- Pressure settings: 175psi (12.1bar)



FP53L

## System Pressure Relief Valve

### Model LFPV20CB

LFPV20CB is a direct sensed direct acting; diaphragm actuated System Pressure Relief Valve. The intended installations are in systems where it is anticipated that the internal pressure exceeds the rated pressure of the system components, or for installation downstream of a pressure reducing valve in accordance with ANSI/NFPA 13.

- Sizes 1/2" – 3/4" NPT
- UL Listed and FM Approved
- Max. inlet pressure: 450psig
- Lead Free\* body design



\*The wetted surface of this product contacted by consumable water contains less than 0.25% of lead by weight.



## Fire Service Accessories

### 7001, 7002 Strainers

Protects critical fire system equipment from debris and fouling.

- Epoxy-coated, steel body with flanged or grooved connections
- UL Listed and FM Approved
- Maximum working pressure: 175psi (12bar)
- Single or dual port clean-out options
- Sizes 3" – 10"

### In-building Risers

In-building risers are used to connect the main fire supply to the building fire suppression system. The fitting passes under the foundation without joints and extends up through the floor. Required by California state fire marshal.

- Provided with installation tabs, lifting lugs, and a pressure test caps
- CIPS (cast iron pipe size) coupler for easy connection to the underground supply (AWWA C900 PVC) and ductile iron pipe (Sizes 4" – 10")
- Industry standard grooved end connection (AWWA C606) on the building side for easy connection to overhead fire sprinkler system
- Male NPT inlet available on sizes 2" – 3"
- Standard 6'x6' configuration with custom lengths from 3' to 20' available
- UL Listed, FM Approved, and NSF 61 Certified
- Sizes 2" – 10" diameter



7001



IBR2

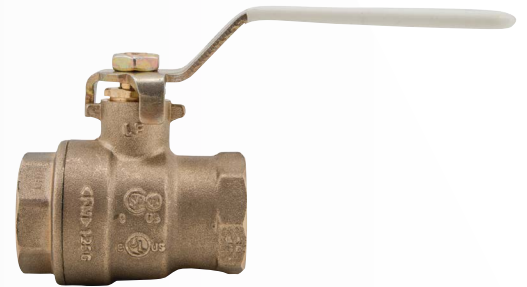
IBR

## Ball Valves

### Series LFFBV-3C-M1, LFFBVS-3C-M1

Series LFFBV-3C-M1 2-piece, full port, Lead Free\* ball valves are used in commercial and industrial applications for a full range of liquids and gases.

- Lead Free\* forged copper silicon alloy body and adapter
- Certified to NSF/ANSI standard 6<sup>1</sup>/<sub>6</sub>
- CSA Approved threaded valves only 1/4" – 3"
- UL Listed and FM Approved threaded valves 1/4" – 2"
- FM Approved solder valves 1/2" – 2"
- UL Listed solder valves 1/2" – 2"
- Fluorocarbon elastomer stem O-ring prevents stem leaks
- Adjustable stem packing gland
- PTFE stem packing seal, thrust washer, and seats
- Bottom loaded blowout proof stem
- Machined chrome plated Lead Free\* brass ball
- Valves comply to MSS-SP-110 standard



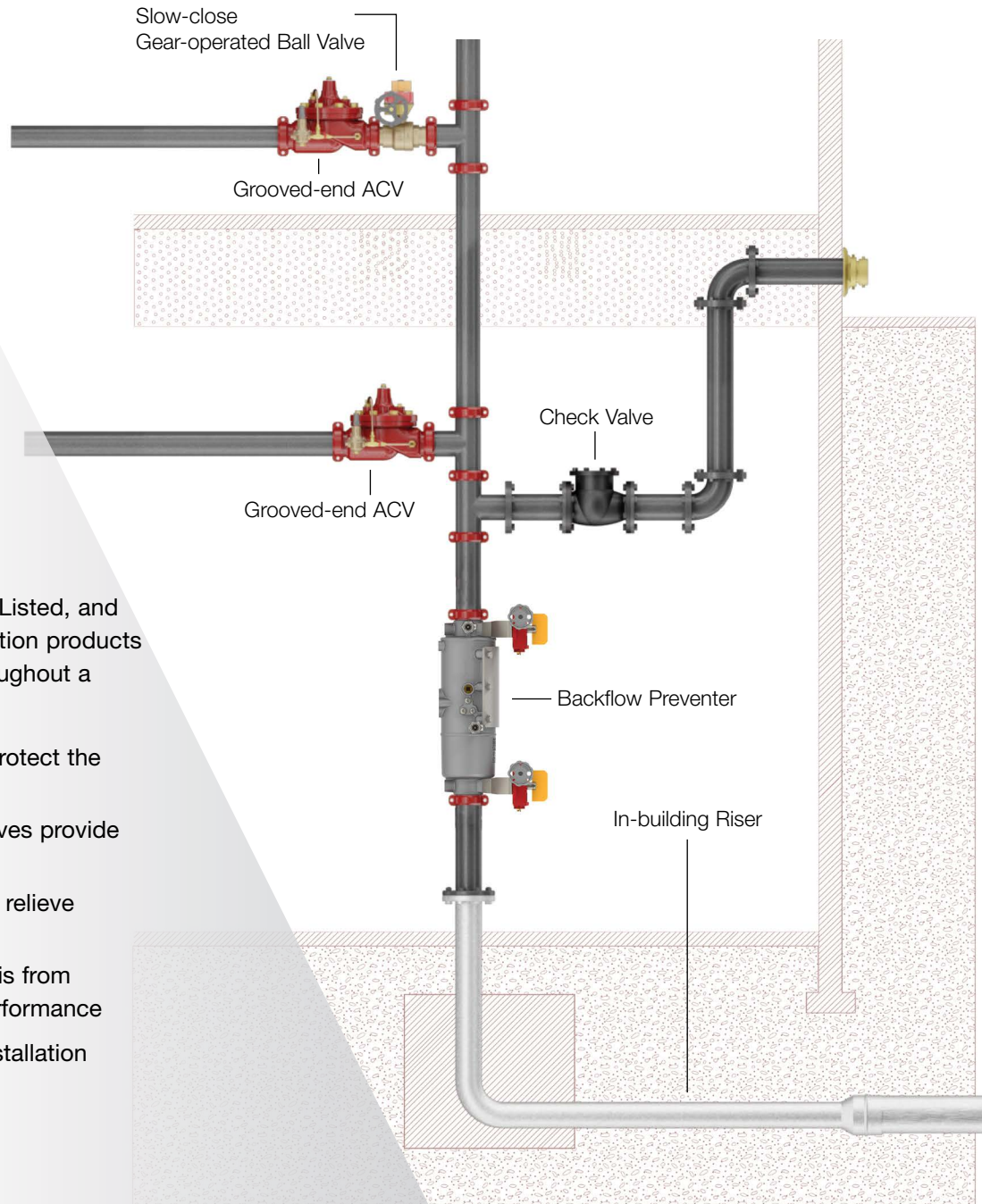
LFFBV-3C-M1

\*The wetted surface of this product contacted by consumable water contains less than 0.25% of lead by weight.

## Build quality and reliability into your fire protection system from the ground up.

Ames UL Classified, UL Listed, and FM Approved fire protection products provide flow control throughout a sprinkler system:

- Backflow preventers protect the water system
- Gear-operated ball valves provide on/off control
- ACVs help reduce and relieve pressure
- Strainers to keep debris from impacting systems performance
- Risers ease system installation



**A WATTS Brand**

**USA: Backflow** T: (978) 689-6066 • F: (978) 975-8350 • [AmesFireWater.com](http://AmesFireWater.com)  
**USA: Control Valves** T: (713) 943-0688 • F: (713) 944-9445 • [AmesFireWater.com](http://AmesFireWater.com)  
**Canada:** T: (888) 208-8927 • F: (905) 481-2316 • [AmesFireWater.ca](http://AmesFireWater.ca)  
**Latin America:** T: (52) 55-4122-0138 • [AmesFireWater.com](http://AmesFireWater.com)